

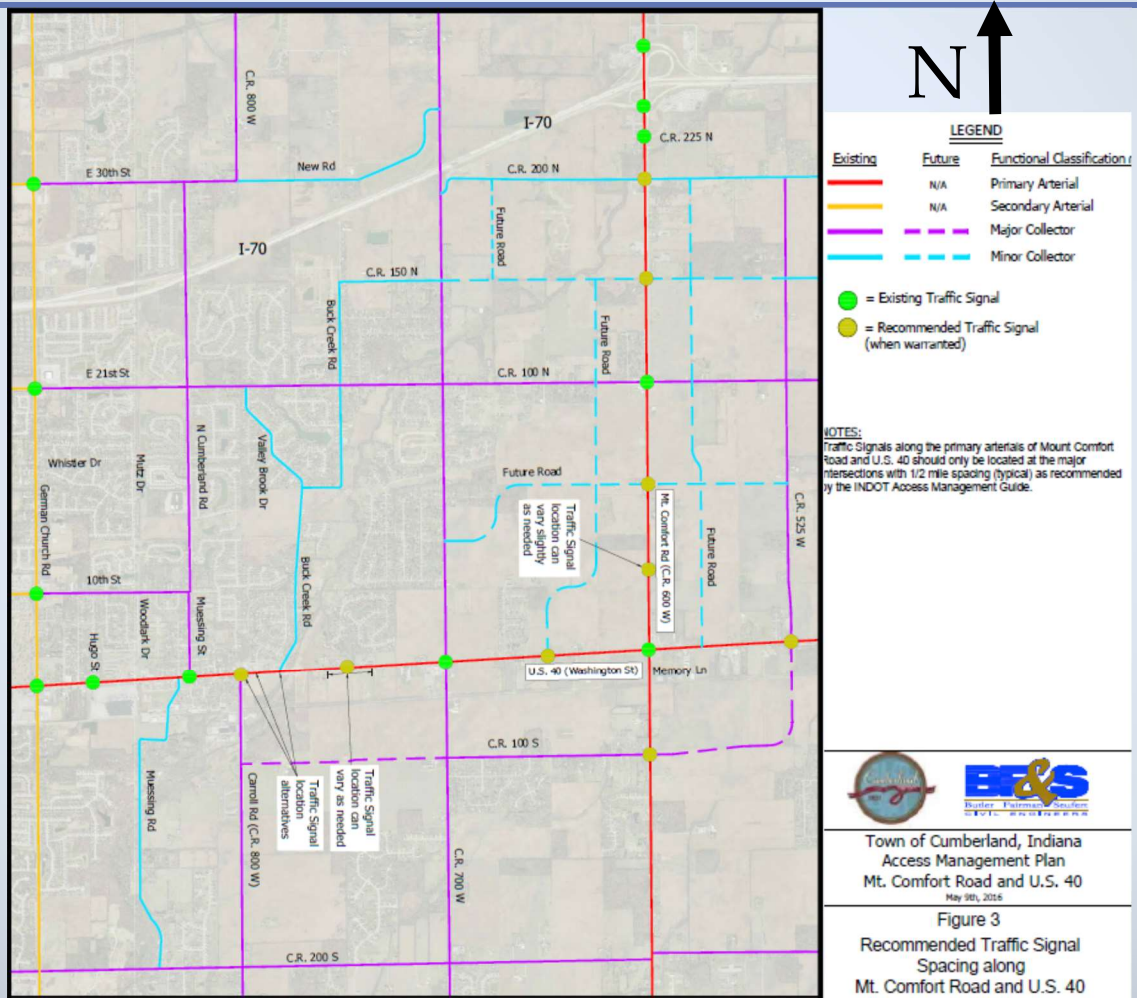
# 2016 Access Management Plan

Proposed New Plan

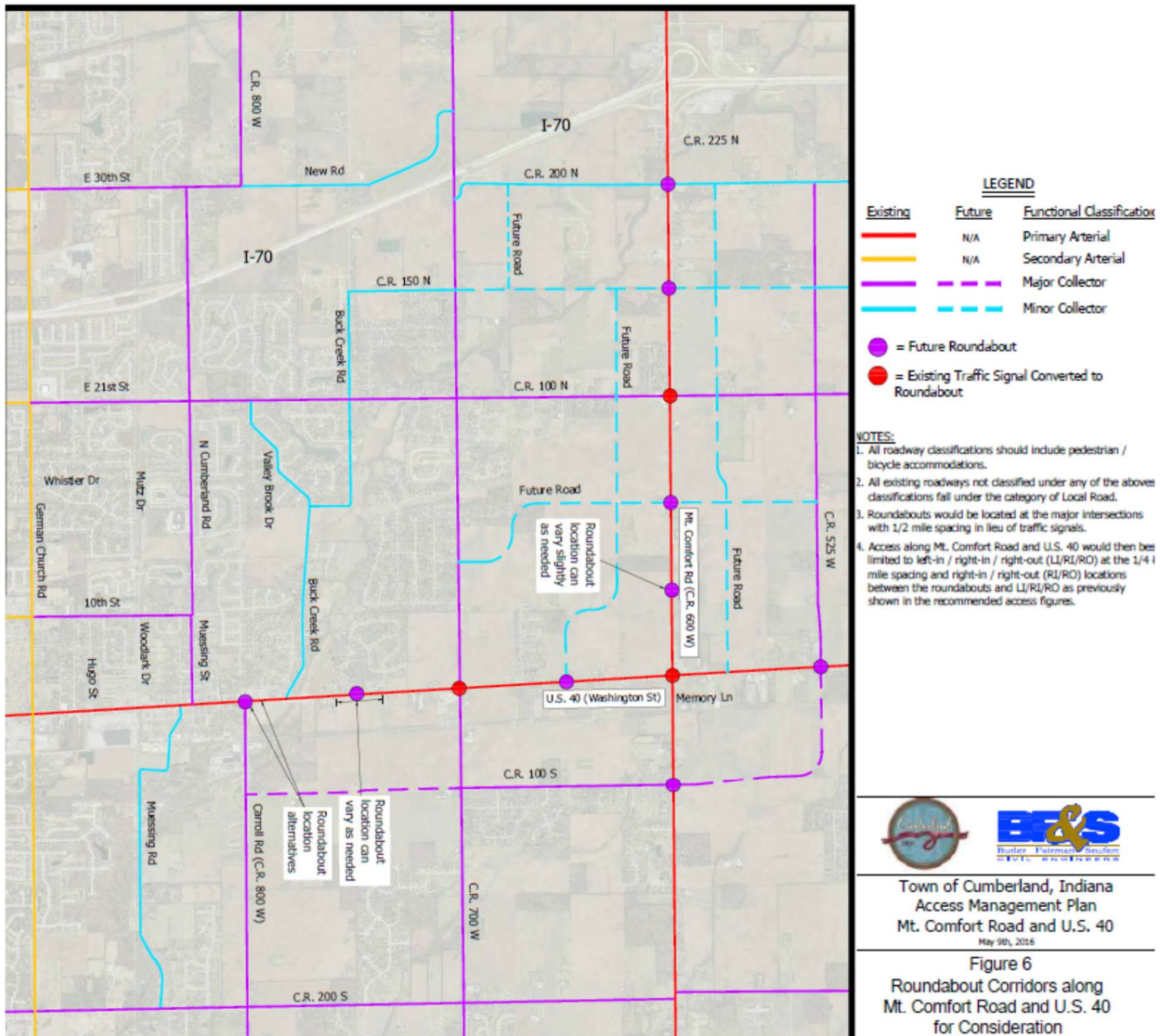
July 2016

The Access Management Plan looks at the Mt. Comfort Road and US HWY 40. These are the two main thoroughfares in the Cumberland planning area. Access management tries to minimize conflict points and preserve the functionality of roads and thoroughfares. Recommendations for arterials include half mile spacing of signals. For example, driving along E. Washington St. from I-465 to German Church Road signals are spaced roughly every quarter of a mile. This leads to back ups at times and can slow the commute and lower the level of service of the road. This plan recommends using access roads and new local roads to connect drivers to signals and “full” access points at the ½ mile point and all other access points would be restricted to right in and right out only.

*Ideal separation for traffic signals is ½ mile. The proposed access management plan proposes new full access points at that spacing and new collector roads to link traffic to intersections.*



As the area develops and traffic warrants further study, the Town could pursue roundabout corridors along these arterials. This plan includes a vision for how these corridors could provide for traffic flow and access for the long term.



You are invited to provide verbal comments, questions, and/or suggestions at the **Public Hearing Scheduled for July 27, 2016 at 7 p.m.** or submit written comments to:



Town of Cumberland  
 Department of Planning & Development  
 11501 E. Washington St.  
 Cumberland, IN 46229  
 (317) 894-6202  
 www.town.cumberland.in.us